

February 18th, 2022

Matthew Deist – ANR Agent

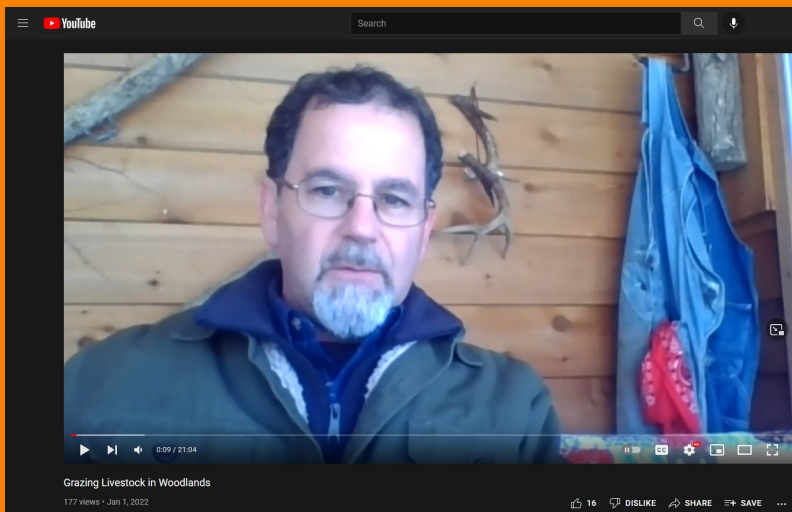
423.942.2656 or mdeist@utk.edu



Tax Tips for Everyone: February 2022

From the updated child tax credit and standard deductions to income tax brackets and charitable donations, Tax Tips for Everyone is created every year to provide updates on current tax topics and increase understanding of terms and issues on income and other taxes. Click the link below for more info.

<https://arec.tennessee.edu/tax-tips-for-everyone-february-2022/>



Grazing Livestock in Woodlands

In this edition of back porch forestry, Dr. David Mercker covers the benefits, detriments, and other considerations for grazing livestock in the woods. This video, including the others in this series, are essentially 30 slides in 30 minutes or less. Great topic and very applicable to our area.

<https://www.youtube.com/watch?v=f0eZkBCnXQY>



Spring Midday Webinar Series

There are 3 different offerings of the Master Beef Producer program this year. One of which is the Spring Midday webinar series from 11am-12pm Tuesdays & Thursdays through March 10th. Next week's topics are Bull Selection and Fence Line Hay Feeders. Click below for more info.

<https://tiny.utk.edu/MiddayMBP>



The Infamous Sea of Yellow...

UT research indicates 2,4-D Ester applied BEFORE bloom (now) will control hairy buttercup while bulbous buttercup is controlled by products containing aminopyralid or Dicamba.

<https://tiny.utk.edu/ButtercupControl>



2022 Novel Tall Fescue Renovation Workshop

March 23, 2022 | Spring Hill TN

Workshop focused on managing tall fescue toxicity and introducing novel tall fescue varieties

Register today and save!

visit www.UTBeef.com for more info



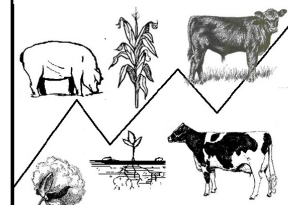
<https://tiny.utk.edu/FescueRenovation>

Tennessee Market Highlights

UTEXTENSION
 INSTITUTE OF AGRICULTURE
 THE UNIVERSITY OF TENNESSEE
 February 18, 2022
 Number: 7

Click below & select **February 18**

<https://tiny.utk.edu/MarketHighlights>



Programs in agriculture and natural resources, 4-H youth development, family and consumer sciences, and resource development. University of Tennessee Institute of Agriculture, U.S. Department of Agriculture and county governments cooperating. UT Extension provides equal opportunities in programs and employment.

